

Rockwell CompactLogix/FlexLogix

Supported Series: Rockwell ControlLogix, CompactLogix, FlexLogix CH0 DF1.

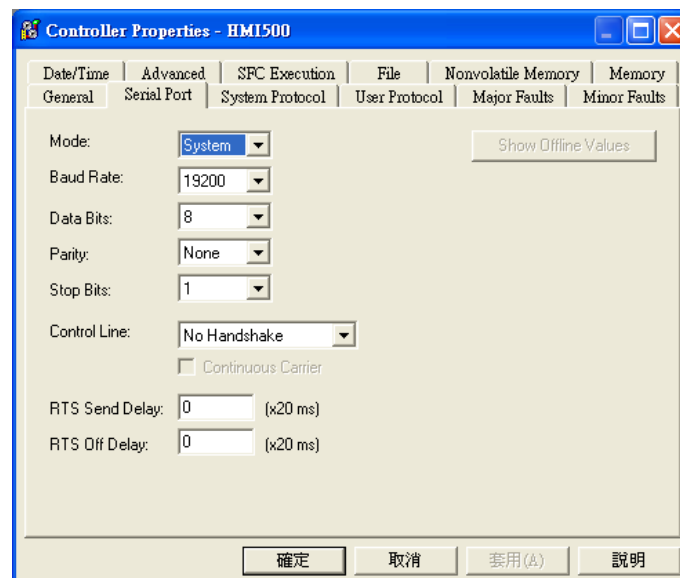
Website: <http://www.ab.com>

HMI Setting:

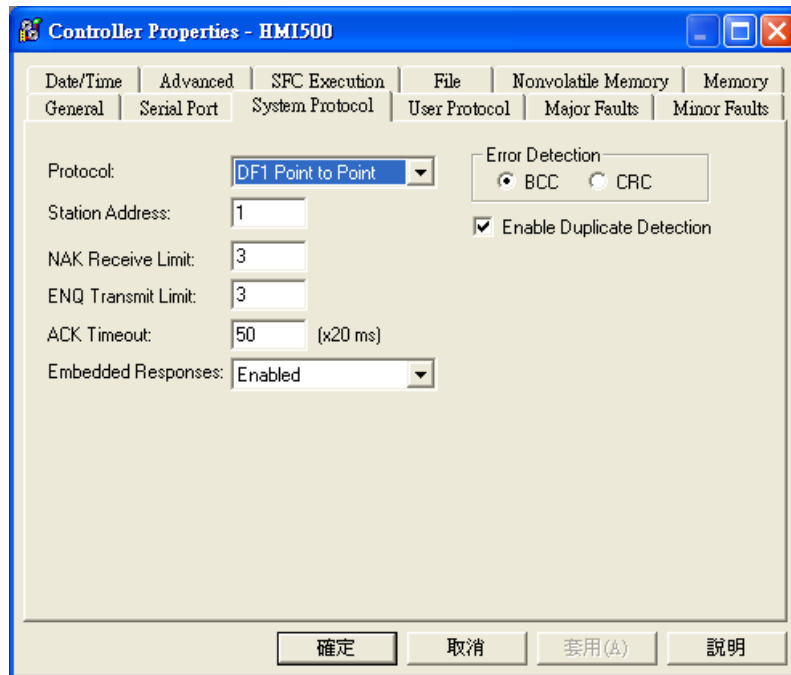
| Parameters | Recommended | Options | Notes |
|--------------|--------------------------------------|--------------------|-------|
| PLC type | Allen-Bradley CompactLogix/FlexLogix | | |
| PLC I/F | RS232 | | |
| Baud rate | 19200 | 9600, 19200, 38400 | |
| Data bits | 8 | 8 | |
| Parity | None | Even, Odd, None | |
| Stop bits | 1 | 1 | |
| HMI sta. no. | 0 | | |
| PLC sta. no. | 1 | 1-31 | |

PLC Setting:

| | |
|--------------------|--|
| Communication mode | DF1 Full Duplex protocol 19200, None, 8, 1 (default) Error Check: BCC, Station Address: 1 |
|--------------------|--|



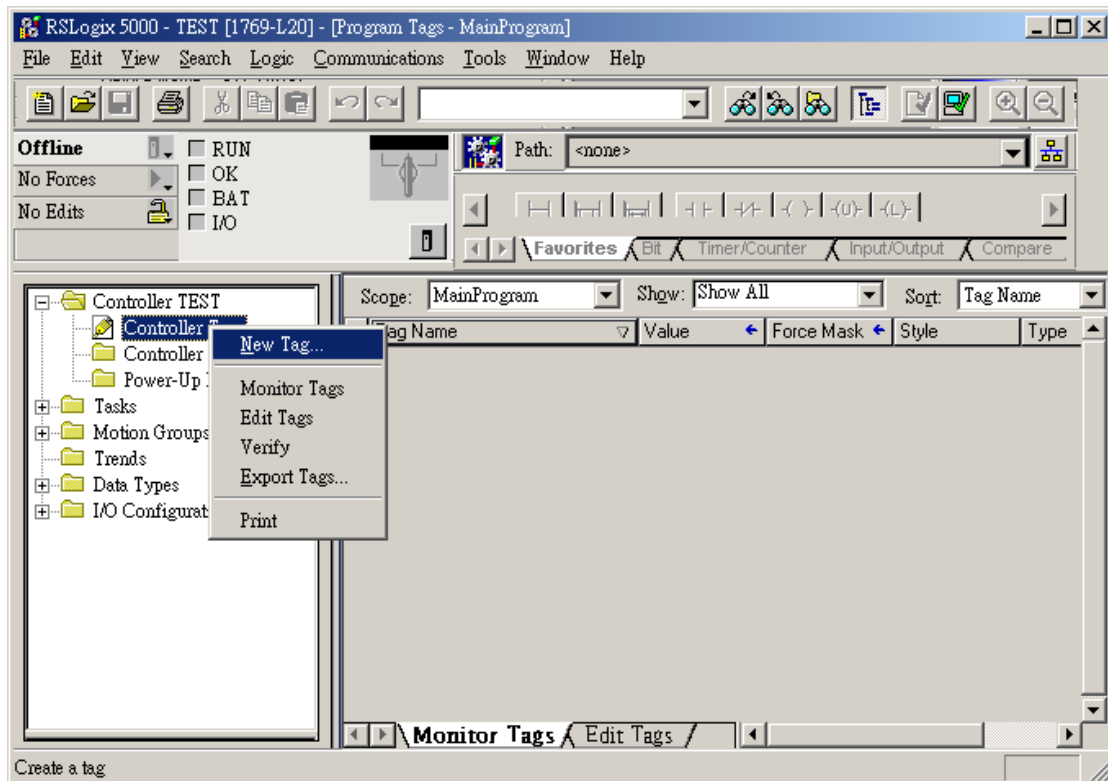
ControlLogix, CompactLogix CPU CH0 setting:

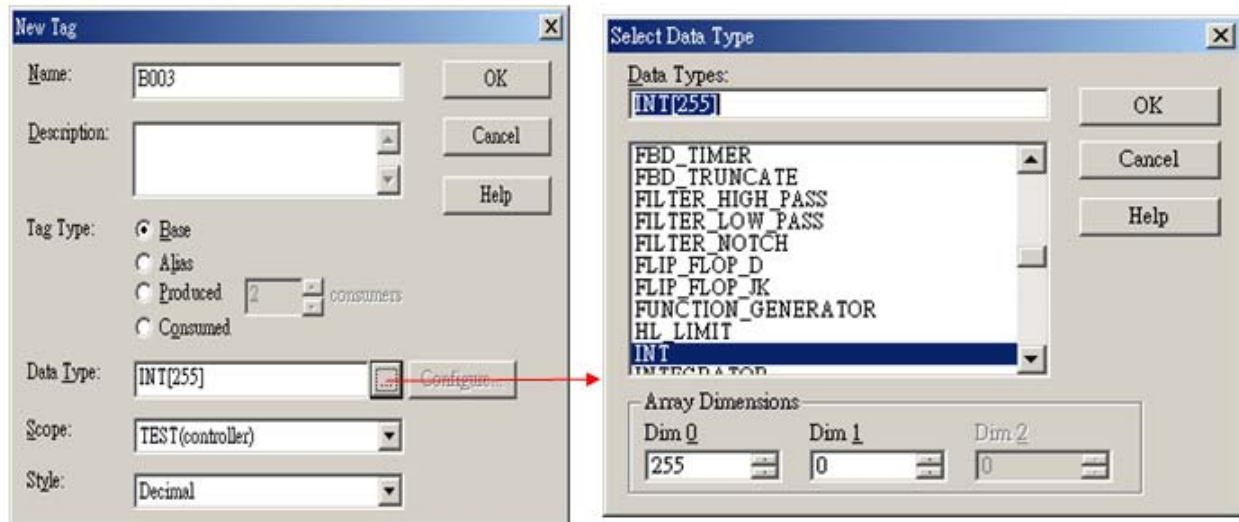


Create a Tag:

The name format must be 4 chars. For example: B003, T004, C005, N007, and F008.

Two or three chars are not available. For example: B03 or B3.








Device Address:

| Bit/Word | Device type | Format | Range | Memo |
|----------|-------------|-----------|--------------|--|
| B | B_BOOL | FFFDDDDdd | 0 ~ 25525515 | Bit data file |
| B | N_BOOL | FFFDDDDdd | 0 ~ 25525515 | Integer data file bit level (N7, 10 ~ 255) |
| DW | Tx.ACC | FFFDDD | 0 ~ 255255 | Timer Accumulator Value (T4, T10 ~ 255) |
| DW | Tx.PRE | FFFDDD | 0 ~ 255255 | Timer Preset Value (T4, T10 ~ 255) |
| DW | Nx_INT | FFFDDD | 0 ~ 255255 | Integer data file (N7, 10 ~ 255) |
| W | Bx_INT | FFFDDD | 0 ~ 255255 | Bit data file word level |
| DW | Cx.ACC | FFFDDD | 0 ~ 255255 | Counter Accumulator Value (C5, C10 ~ 255) |
| DW | Cx.PRE | FFFDDD | 0 ~ 255255 | Counter Preset Value (C5, C10 ~ 255) |
| W | F8_REAL | DDD | 0 ~ 255 | Floating point data file (F8) |
| W | Fx_REAL | FFFDDD | 0 ~ 255255 | Floating point data file (F008, F010 ~ F255) |





Wiring Diagram:

The following represents the cable end connector.



eMT3000 series

| COM1 RS232 9P D-Sub Female | COM3 RS232 9P D-Sub Female | | AB CPU CH0 RS232 9P D-Sub Female |
|---|---|--|---|
| 2 RX | 8 RX | | 3 TD |
| 3 TX | 7 TX | | 2 RD |
| 5 GND | 5 GND | | 5 GND |
|  |  | |  |

MT6000/8000 series except MT6050i/MT8050i

| COM1 RS232 9P D-Sub Female | COM2 RS232 9P D-Sub Female | COM3 RS232 9P D-Sub Male | AB CPU CH0 RS232 9P D-Sub Female |
|---|---|---|---|
| 2 RX | 6 RX | 8 RX | 3 TD |
| 3 TX | 4 TX | 7 TX | 2 RD |
| 5 GND | 5 GND | 5 GND | 5 GND |
|  |  |  |  |

MT6050i/MT8050i

| COM1 RS232 9P D-Sub Female | | | AB CPU CH0 RS232 9P D-Sub Female |
|---|--|--|---|
| 9 RX | | | 3 TD |
| 6 TX | | | 2 RD |
| 5 GND | | | 5 GND |
|  | | |  |

Driver Version:

| Version | Date | Description |
|---------|-------------|-------------|
| V1.50 | Dec/30/2008 | |