

# Rockwell EtherNet/IP (CompactLogix) – Free Tag Names

Supported Series: Rockwell CompactLogix, FlexLogix Ethernet

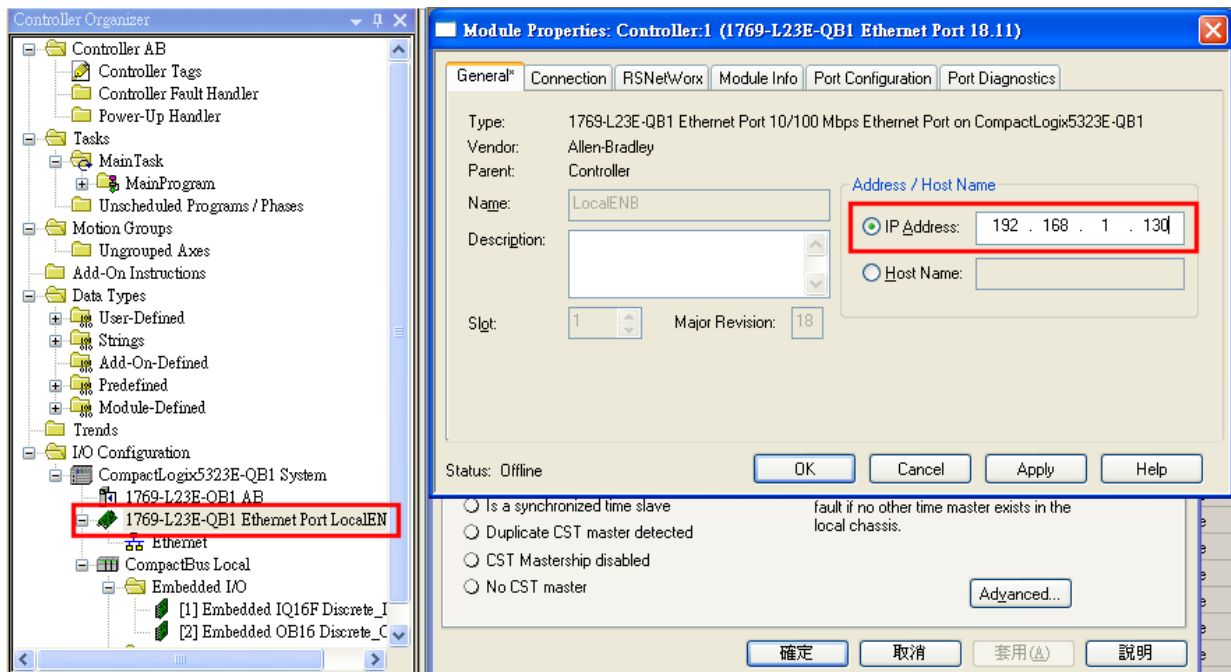
Website: <http://www.ab.com>

## HMI Setting:

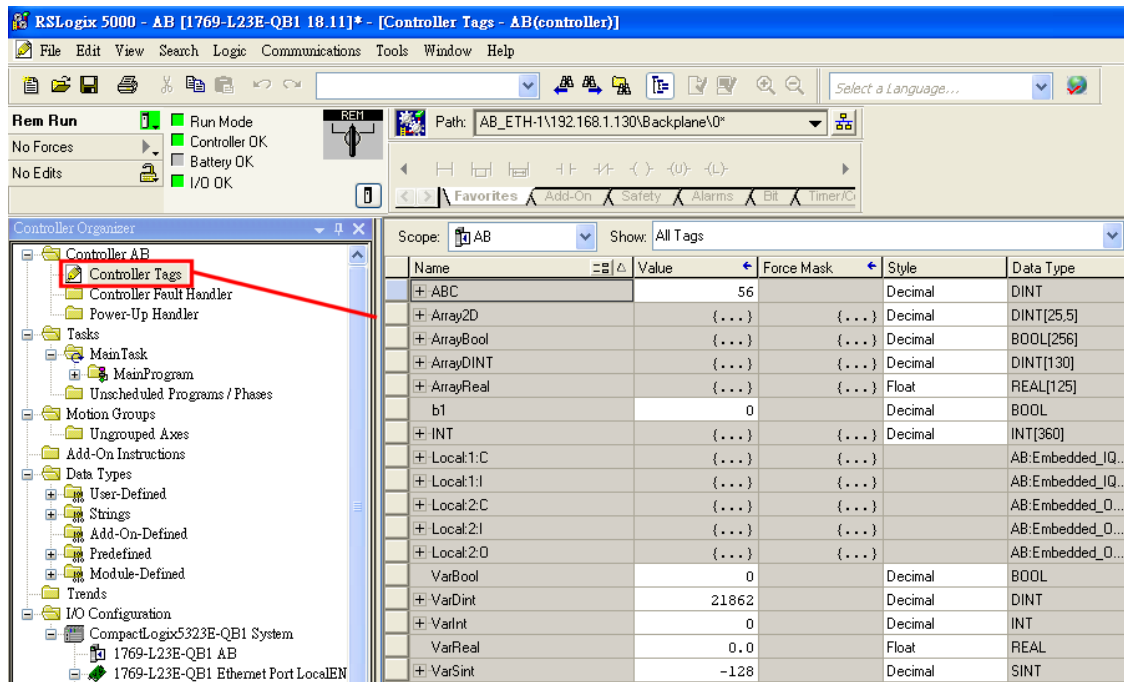
Parameters	Recommended	Options	Notes
PLC type	Allen-Bradley EtherNet/IP (CompactLogix) – Free Tag Names		
PLC I/F	Ethernet		
Port no.	44818		
PLC sta. no.	1		

## PLC Setting:

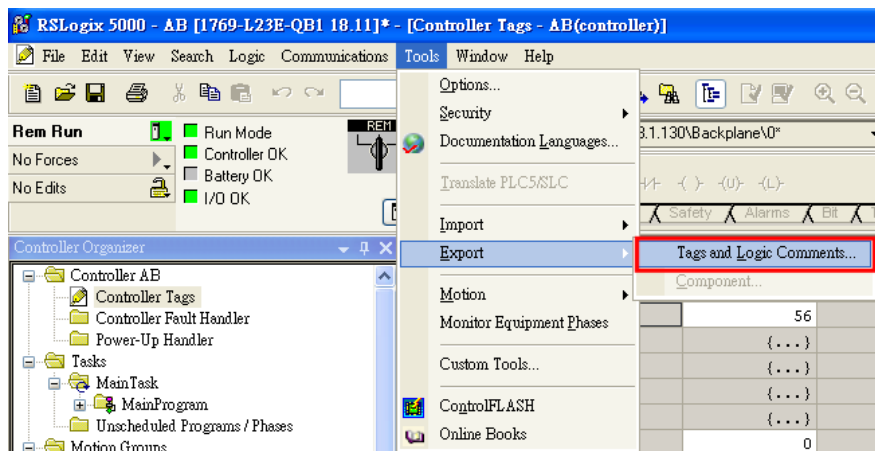
1. Set PLC IP address.



## 2. Create Tags.



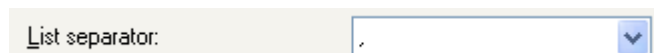
## 3. Export Tag data to CSV file.



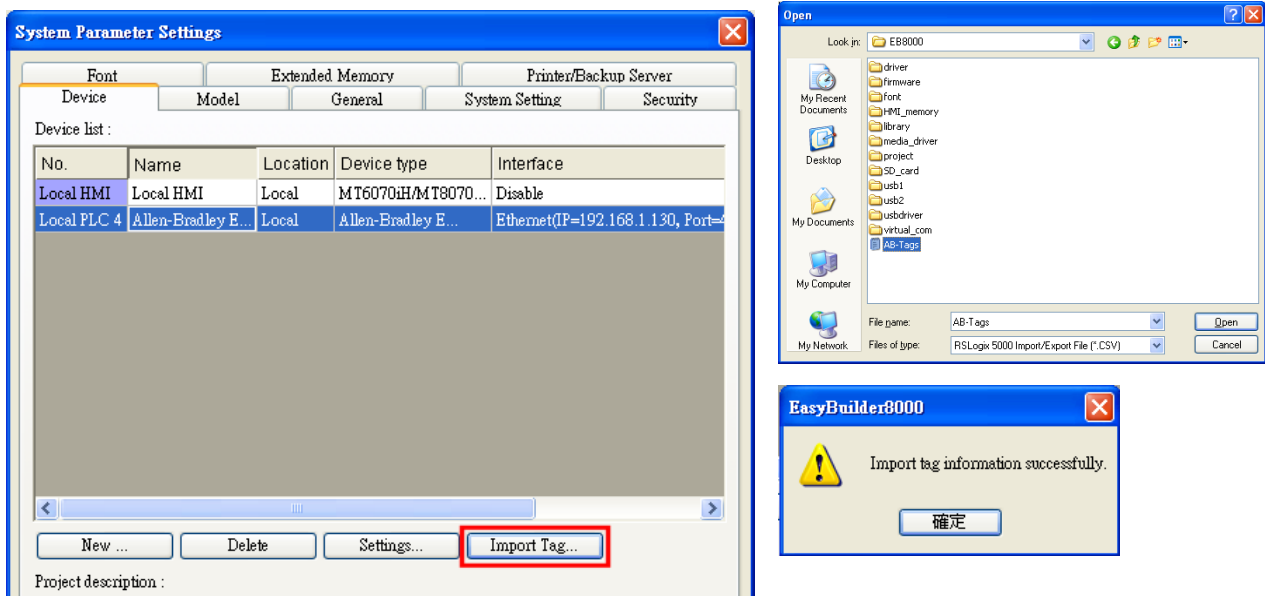
Note: The List Separator of the exported CSV file must be “,” otherwise it may not work.

TAG	Array2D	DINT[25,5]	(RADIX := Decimal, Constant := false, External Access := Read/Write)
TAG	ArrayBool	BOOL[256]	(RADIX := Decimal, Constant := false, External Access := Read/Write)
TAG	ArrayDINT	DINT[130]	(RADIX := Decimal, Constant := false, External Access := Read/Write)

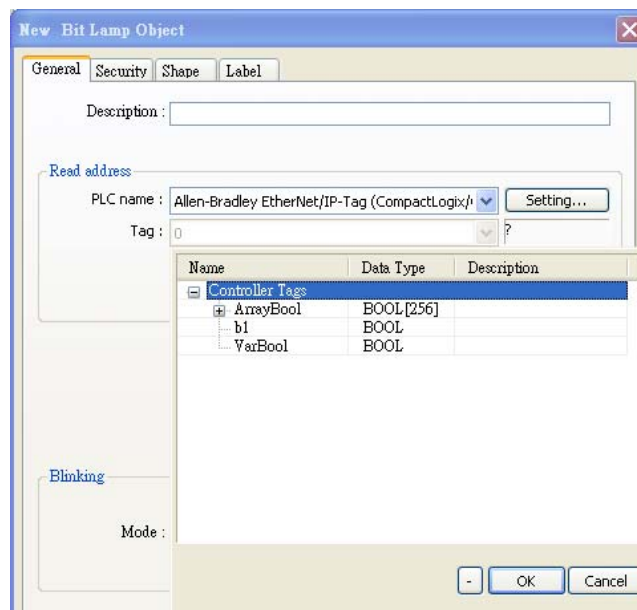
The directory of changing system settings: **Control Panel / Date, Time, Language, and Regional Options / Change the format of numbers, dates, and times / Customize / List separator**. Please select “,” and export CSV file after setting.



4. In EasyBuilder, add Allen-Bradley EtherNet/IP (CompactLogix)- Free Tag Names driver. Input PLC IP address. On System Parameter Settings dialog click [Import Tag...] button.



5. On object dialog, select PLC, click Tag and select a Controller Tag.




## Device Address:

PLC data type name	Bit/Word	EasyBuilder data format	Memo
BOOL	Boolean	Bit object	
BitArray			
SINT			
INT	Integer	16-bit signed, ASCII	-32768 ~ 32767
DINT	Double Integer	32-bit signed	$-2^{31} \sim (2^{31}-1)$
REAL	Single Precision Float	32-bit Float	IEEE 754

## Wiring Diagram:


Direct connect (crossover cable):

HMI RJ45 Male	Wire Color	PLC RJ45 Male
1 TX+	White/Orange	3 RX+
2 TX-	Orange	6 RX-
3 RX+	White/Green	1 TX+
4 BD4+	Blue	4 BD4+
5 BD4-	White/Blue	5 BD4-
6 RX-	Green	2 TX-
7 BD3+	White/Brown	7 BD3+
8 BD3-	Brown	8 BD3-



Through a hub:

HMI RJ45 Male	Wire Color	PLC RJ45 Male
1 TX+	White/Orange	1 TX+
2 TX-	Orange	2 TX-
3 RX+	White/Green	3 RX+
4 BD4+	Blue	4 BD4+
5 BD4-	White/Blue	5 BD4-
6 RX-	Green	6 RX-
7 BD3+	White/Brown	7 BD3+
8 BD3-	Brown	8 BD3-



## Driver Version:

Version	Date	Description
V1.10	Aug/25/2010	