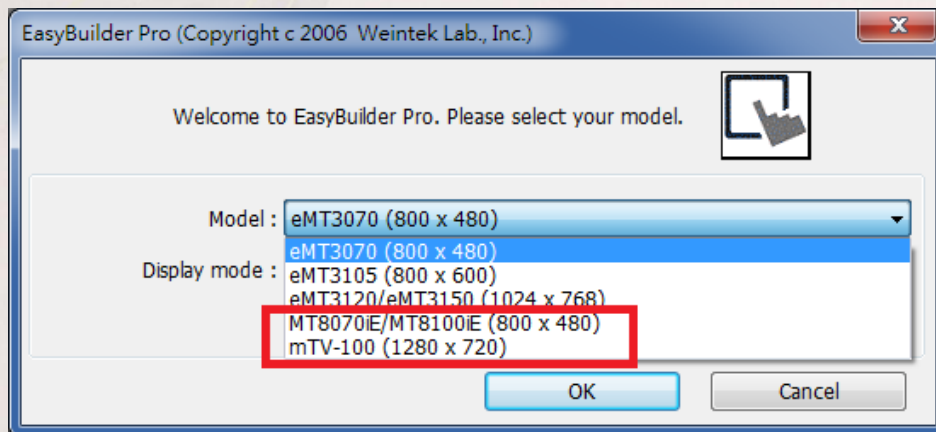


# Release Notes

EasyBuilder Pro Version 3.00. 02 Build 2013/03/27

## New Features

1. New product lines, MT8000iE and mTV-100 Series, are added.



2. Virtual com port and USB download drivers support Windows 7 64bit and Windows 8 32/64bit OS.

## Corrections

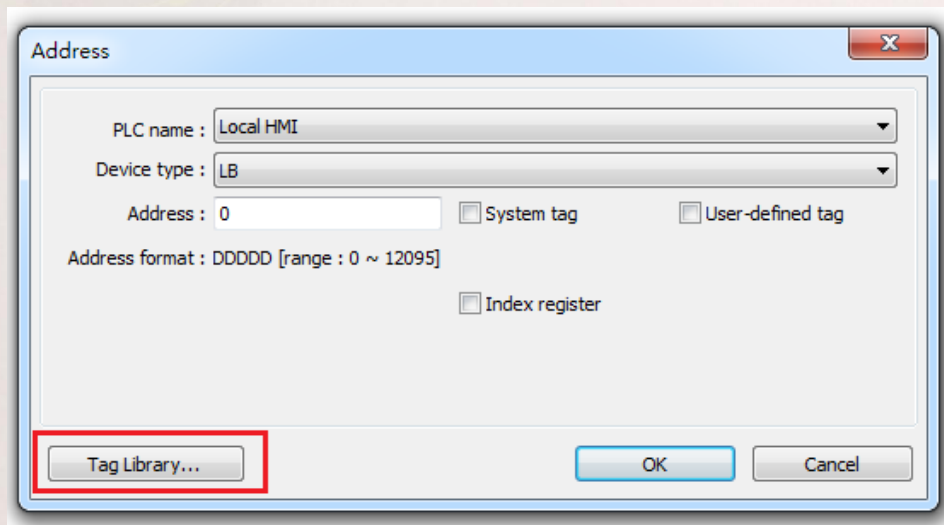
The following errors were corrected in this release:

1. Fixed the problem where multi-lined text in Label Tag Library cannot be correctly copied.
2. Fixed the problem when calling GetError() function in an infinite loop in Macro may result in system crash. The following shows an example:

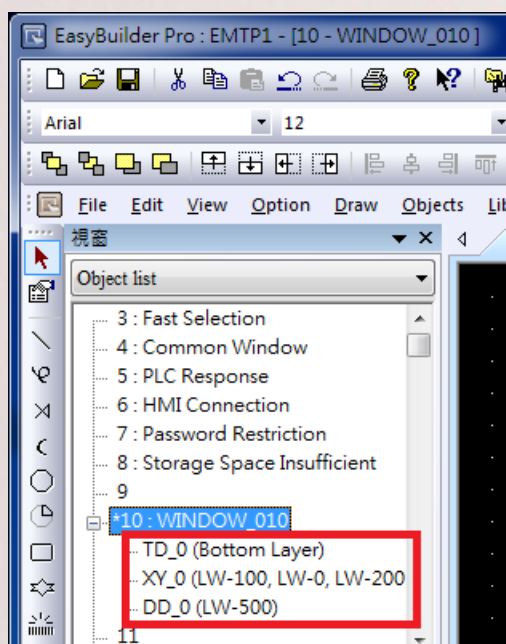
```
while (true)
GetError(Error)
wend
```

# Release Notes

3. Fixed the problem where screen hardcopy cannot copy XY Plot object.
4. Fixed the problem where selecting [Time ascending] mode of Alarm Display object and then roll the scroll bar to view all the records, the display of the records is incorrect.
5. Fixed the problem where entering Address Tag Library by clicking [Tag Library] button may delete certain address tags.



6. Fixed the problem where the addresses used by XY Plot, Trend Display, and Data Block Display objects cannot be correctly displayed in Object List.



# Release Notes

7. Fixed the problem where modifying PLC name in device list, the PLC name used by XY Plot, Trend Display, and Data Block Display objects are not modified in accordance.
8. Fixed the problem where frequently use Backup object can cause HMI to fail in operation.
9. Fixed the problem when placing an array variable on the right hand side of an arithmetic operator can cause error. As shown in the following figure, data[i] is an array variable, placing it on the right side of the addition operator gets incorrect result.

```
macro_command main()  
  
char data[10] = "abcde"  
short var, i  
  
for i = 0 to 10  
    var = var + data[i]  
next i  
  
end macro_command
```

10. Fixed the problem when sending Operation Log records by e-mail, an unnecessary extension name, tmp, is attached in the file name.

## Drivers

1. Fixed the problem where D\_Bit address type of **GE Fanuc Oi MD** driver cannot work correctly.
2. **YASKAWA MP Series Memobus (Ethernet)** driver is added.

For more information, see [Connect Yaskawa device with multiple HMIs](#)

3. The 32-Bit address type of SIEMENS PLC models is not limited to the

# Release Notes

multiples of 4. The relevant PLCs and address types are listed in the following table.

PLC model	Address type
SIEMENS S7/200	VD
SIEMENS S7/200 PPI	VD_Odd
SIEMENS S7/200 (Ethernet)	MD
SIEMENS Smart PPI	SD
SIEMENS Smart (Ethernet)	SMD
SIEMENS S7/300	MD
SIEMENS S7/300 MPI	DBDn
SIEMENS S7/300 (Ethernet)	
SIEMENS S7/400 (Ethernet)	

The listed address types are limited to 32-Bit format.